

**U.S. DEPARTMENT OF ENERGY  
OFFICE OF CIVILIAN RADIOACTIVE WASTE MANAGEMENT**

**NUCLEAR WASTE TECHNICAL REVIEW BOARD  
FULL BOARD MEETING**

**SUBJECT:       DECIDING WHEN ENOUGH  
                  IS ENOUGH**

**PRESENTER:     DR. J. RUSSELL DYER**

**PRESENTER'S TITLE  
AND ORGANIZATION:   DIRECTOR, REGULATORY AND SITE EVALUATION DIVISION  
                                  U.S. DEPARTMENT OF ENERGY  
                                  LAS VEGAS, NEVADA**

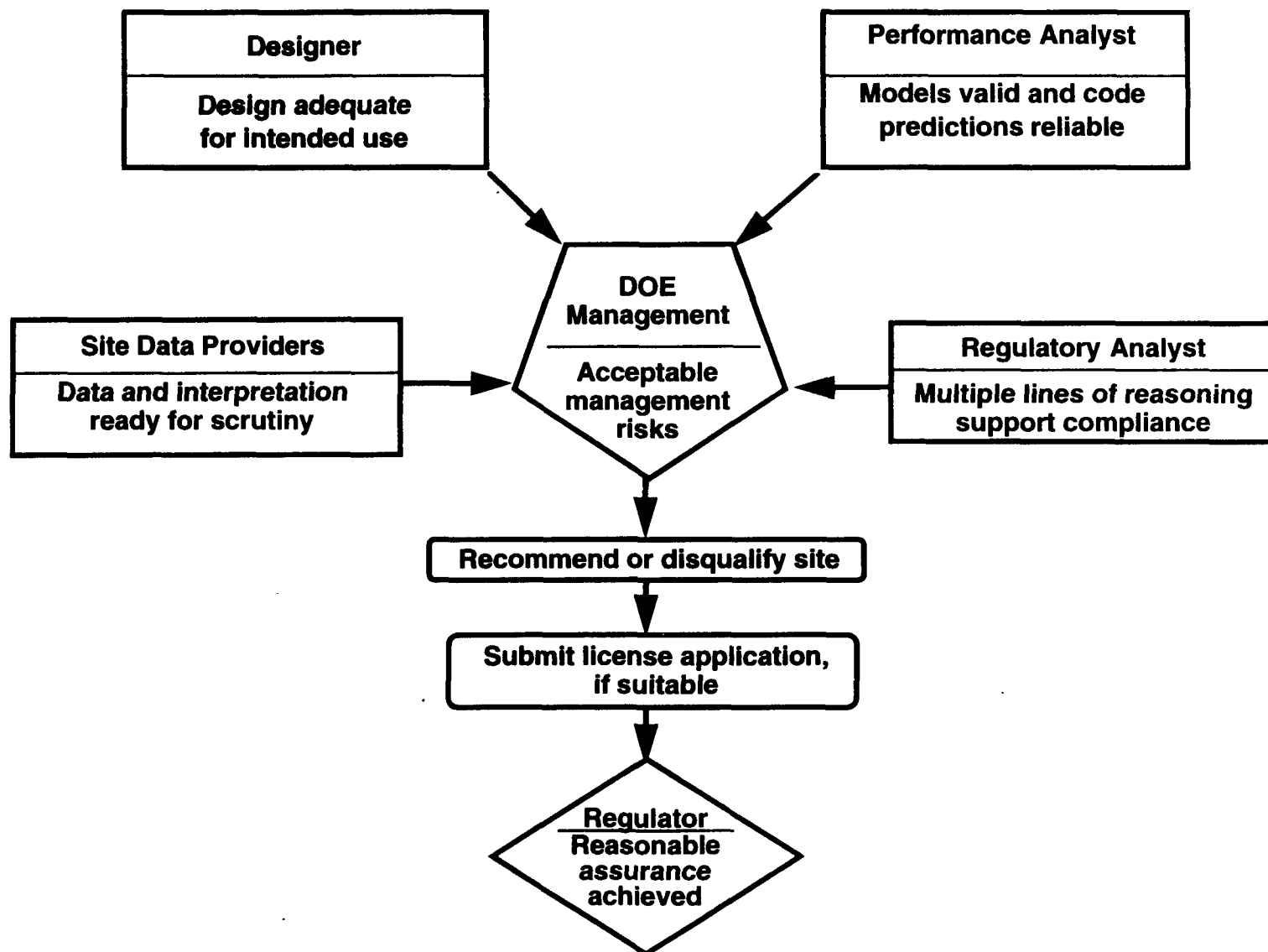
**PRESENTER'S  
TELEPHONE NUMBER:   (702) 794-7586**

**RENO, NEVADA  
APRIL 21-22, 1993**

# Overview

- **Who decides and on what basis?**
- **What are the questions?**
- **How are decisions made?**
- **When are decisions made?**

# Who Decides and on What Basis?



# Who Decides and on What Basis?

- **Providers of Site Data:** data and interpretation ready for scrutiny by others
- **Designer:** design is adequate for intended purpose
- **Performance Analyst:** validity of models adequate and code predictions reliable for use in predicting performance
- **Regulatory Analyst:** multiple lines of reasoning provide basis for demonstrating compliance
- **DOE:** management risks acceptable to proceed
- **Regulator:** reasonable assurance has been achieved

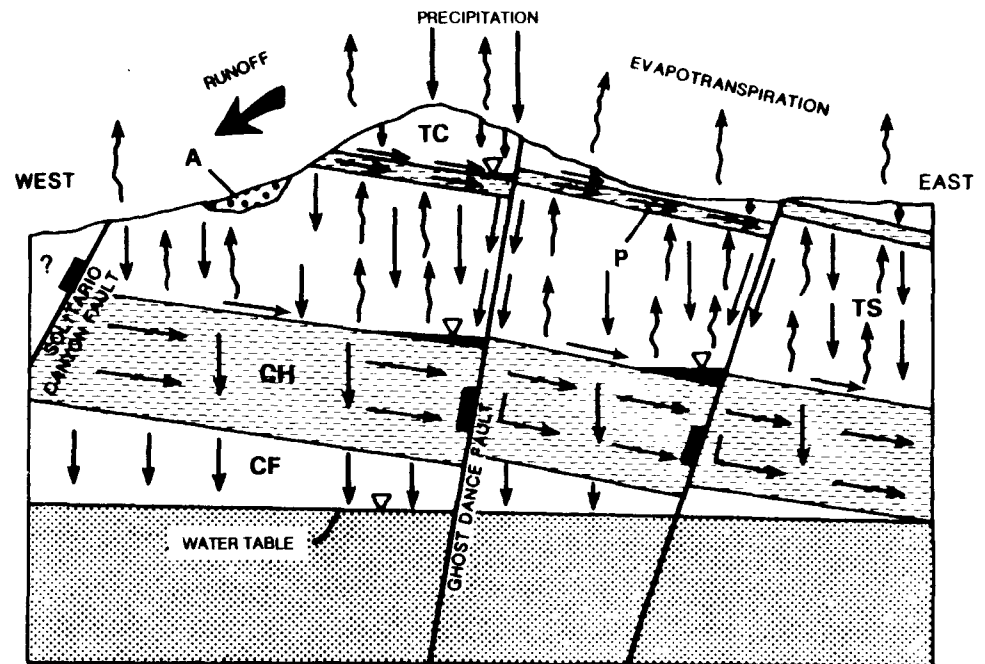
# What are the Questions?

## Providers of Site Data

What means are available to understand current site conditions and processes?

How can the potential for changes in site conditions and processes be established?

How will I ensure I have representative data?



# What are the Questions?

(Continued)

## Designer

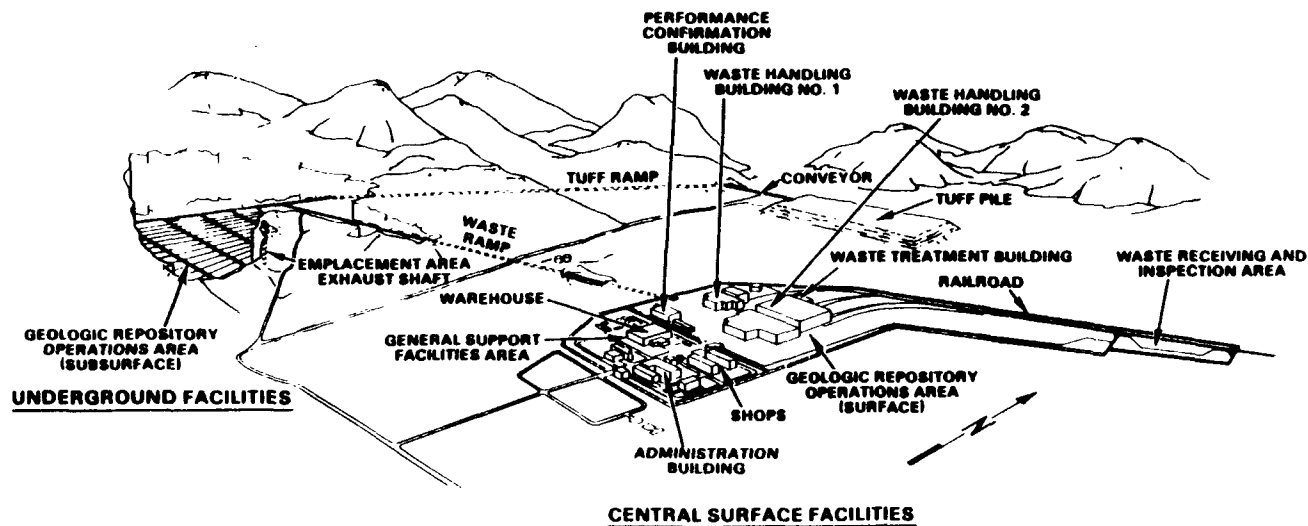
Are data adequate to support design?

Is the design constructable?

Is the design sufficiently optimized?

Is there sufficient design safety margin?

## Preliminary Drawing of Repository Complex



# What are the Questions?

(Continued)

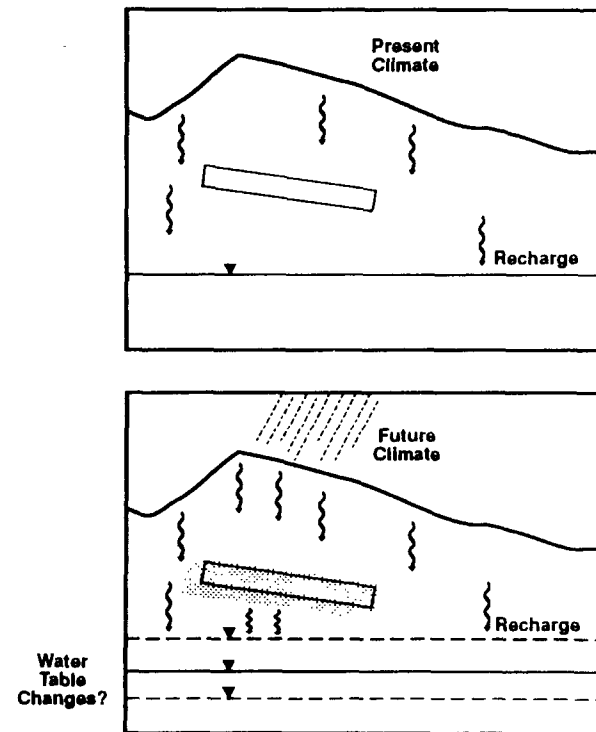
## Performance Analyst

**Are models valid for their intended use?**

**Do plausible alternative models exist?**

**Do alternative models produce significantly different results?**

**Are codes verified?**



# What are the Questions?

(Continued)

## Regulatory Analyst

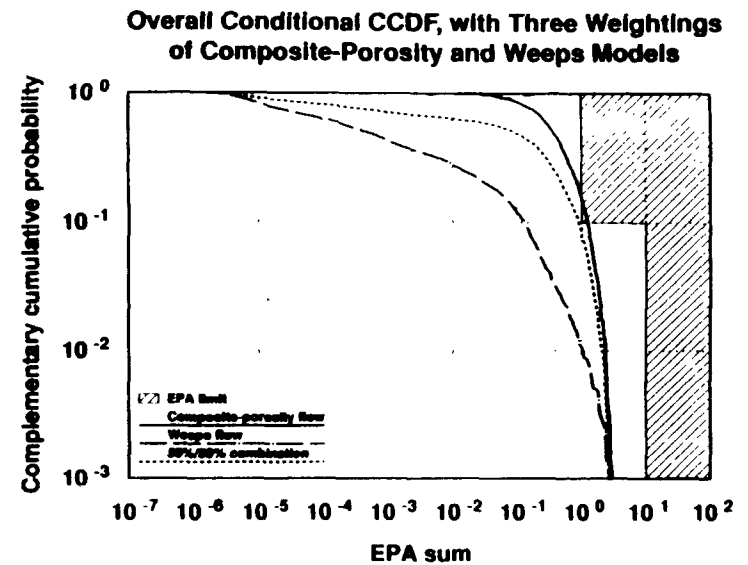
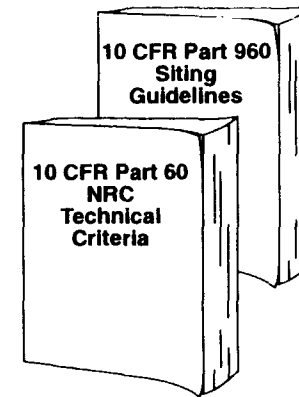
What regulatory questions need to be answered?

Does consensus exist about the preferred site model/models?

Do alternative models produce significant differences in results?

Do predictions meet regulatory criteria?

Are there multiple lines of evidence supporting compliance?





# What are the Questions?

(Continued)

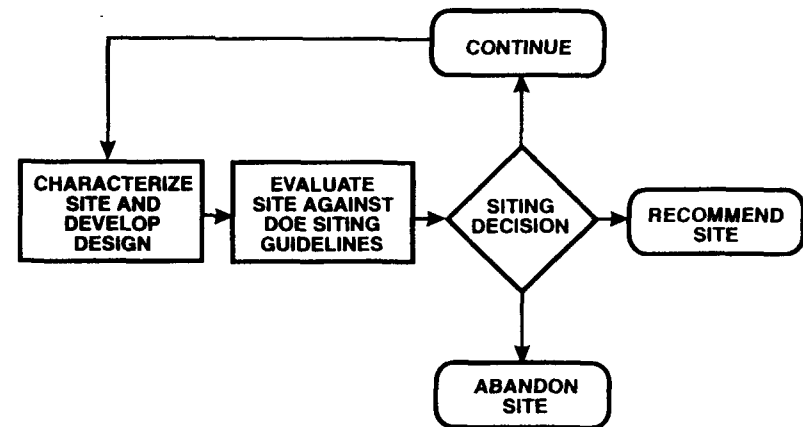
## DOE

**Is performance appropriately allocated among system elements?**

**What is value of obtaining additional site data vs. cost?**

**What is cost/benefit of additional performance assessment?**

**How strong is the case for compliance?**



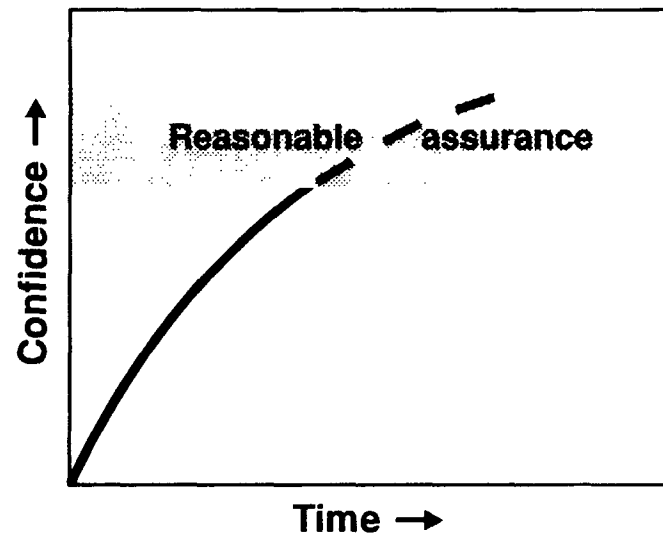
# What are the Questions?

(Continued)

## Regulator

### Must determine:

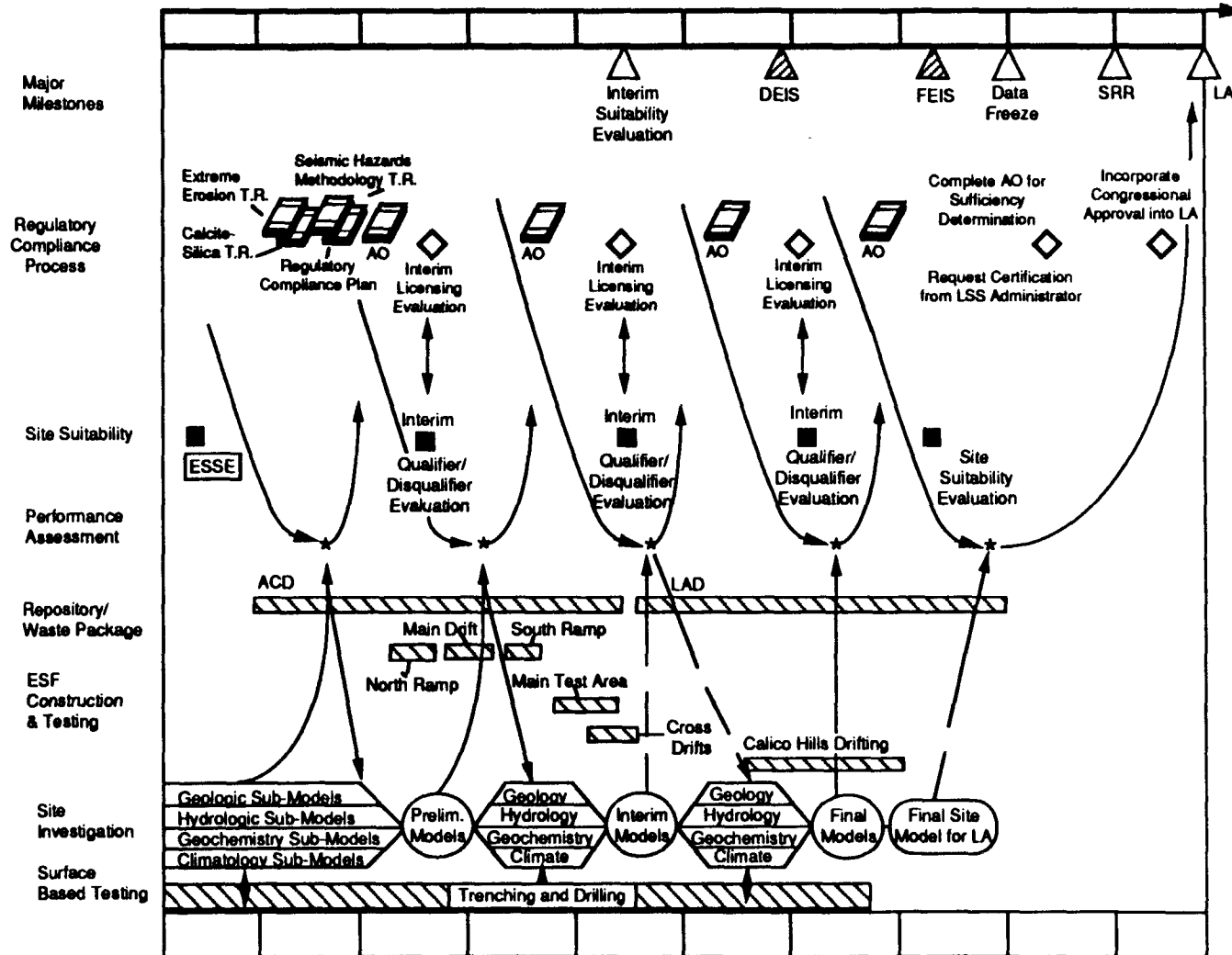
“...there is reasonable assurance that ...radioactive materials can be received, possessed, and disposed of in a geologic repository operations area...without unreasonable risk to the health and safety of the public...” [60.31(a)]



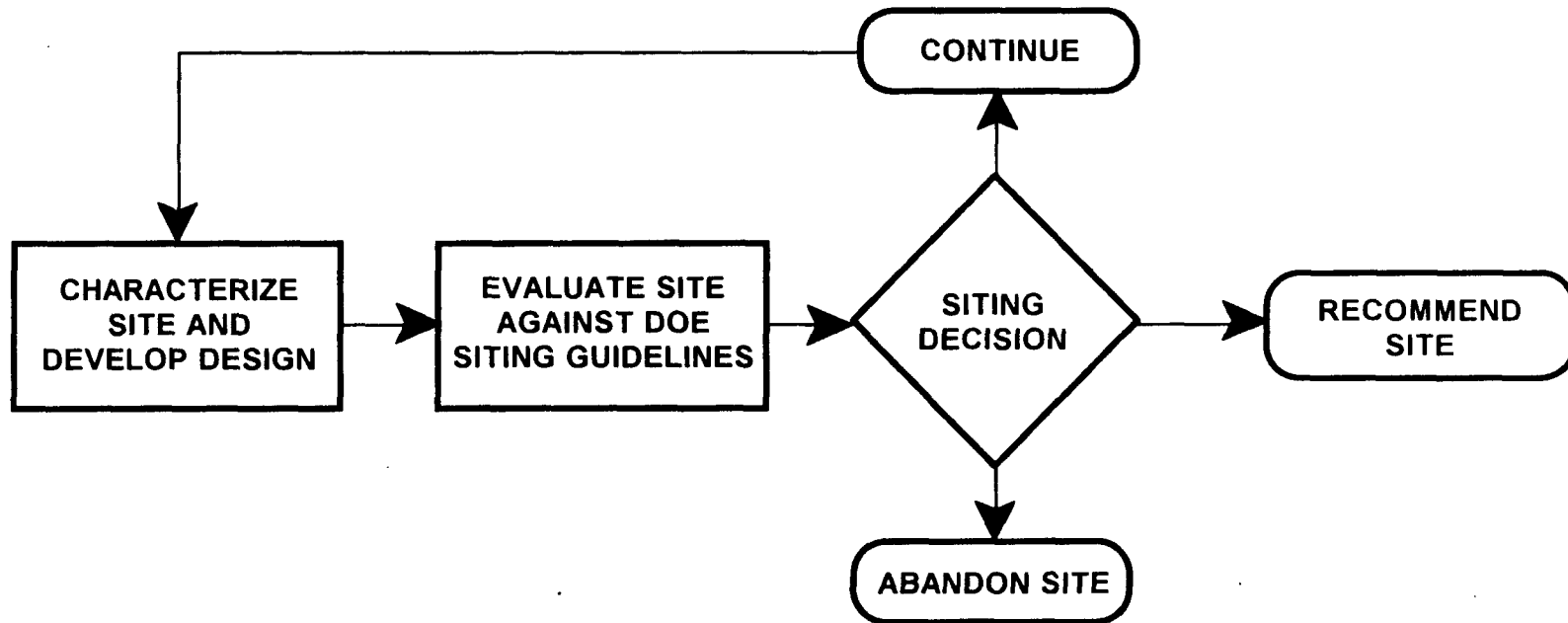
# What Tools can Assist Decision-Making?

- **Providers of Site Data:** Scientific method, expert judgment, peer review
- **Designer:** Applicable design codes, safety factor evaluations
- **Performance Analyst:** Sensitivity and uncertainty analysis, expert judgment
- **Regulatory Analyst:** Applicable precedent, weight of multiple lines of evidence
- **DOE:** Formal peer reviews, expert judgment, feedback from oversight groups and regulator, decision analysis
- **Regulator:** Weight of evidence, expert judgment, independent evaluations

# DOE Perspective When are Decisions Made?



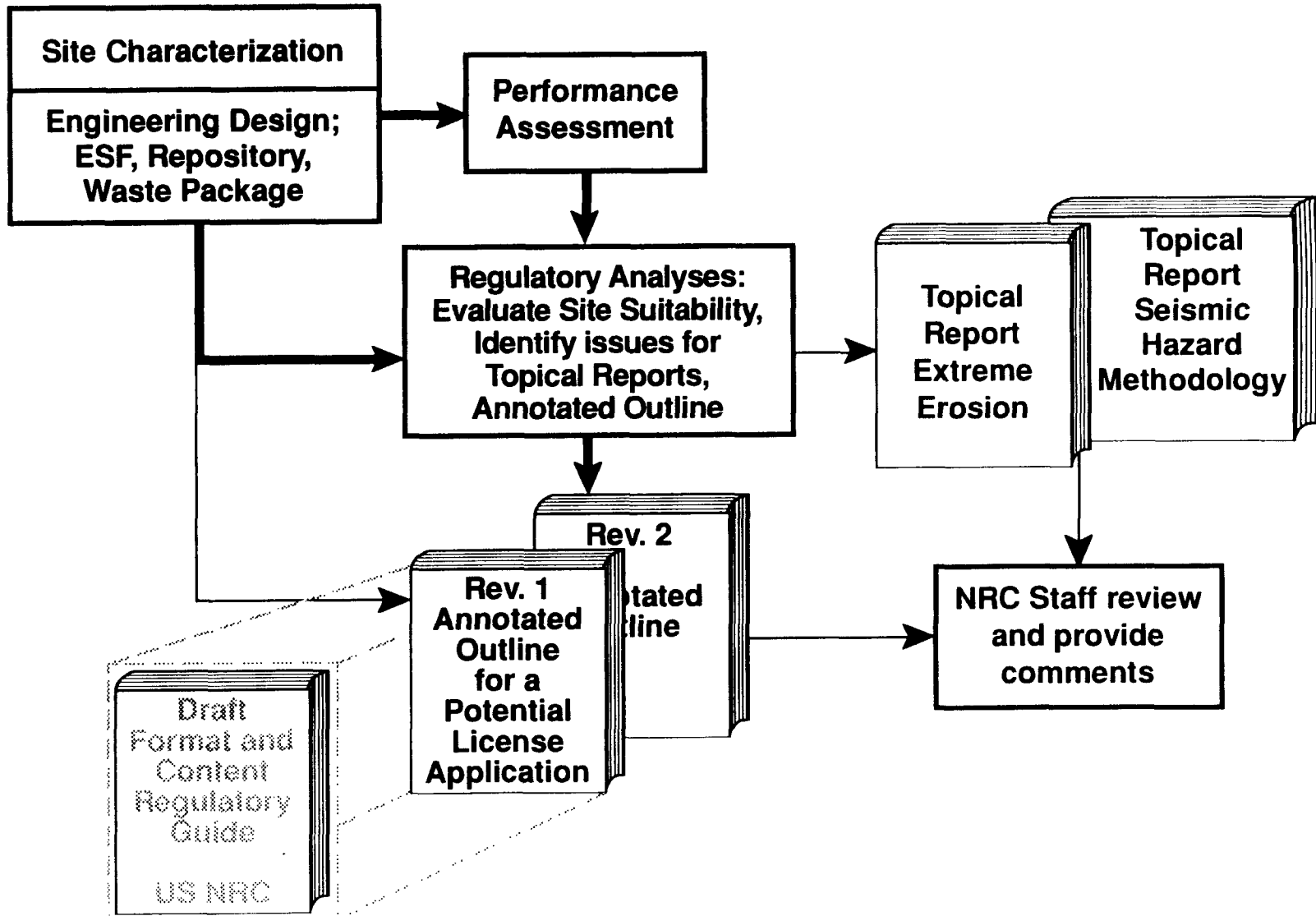
# An Iterative Process is Used for Evaluating Site Suitability



# Suitability Decisions

- **Early Site Suitability Evaluation recommended Ground-Water Travel Time as an area requiring more study before a suitability decision could be made**
- **DOE decision--allocate resources to ensure that high-priority surface-based and underground geohydrologic tests are accomplished and data evaluated in a timely manner**

# Current Issue Resolution Process



# Issue Resolution Process

- **From suite of potential issues, identify candidates for early resolution**
  - **site conditions and processes understood**
  - **consequences for performance documented and acceptable**
  - **evidence supporting compliance adequate to proceed**

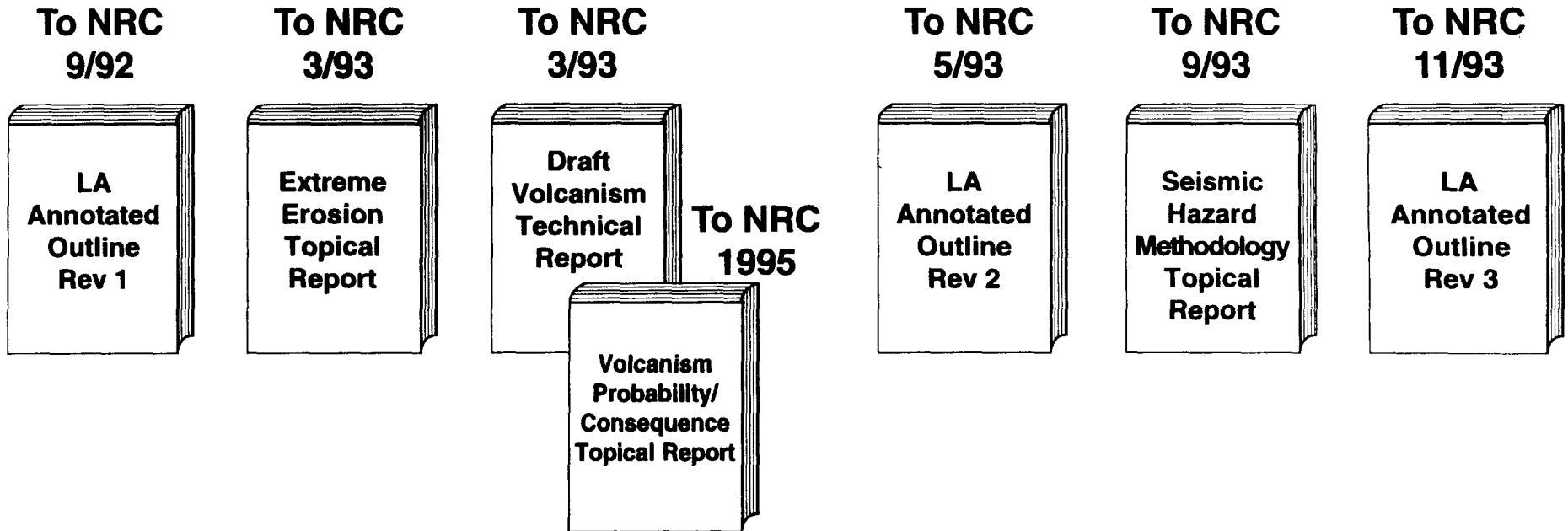
**For each issue:**

**Determine if Topical Reports or other actions (e.g., rulemaking) are necessary**

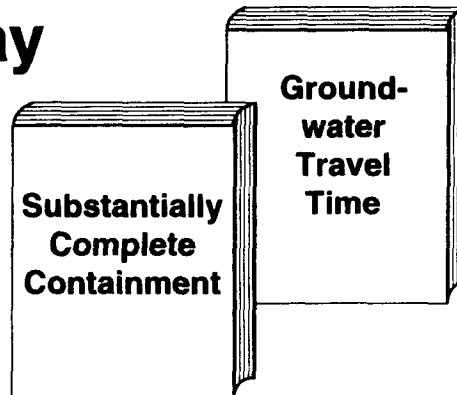
**Prepare Topical Reports as needed and include information in Annotated Outline**



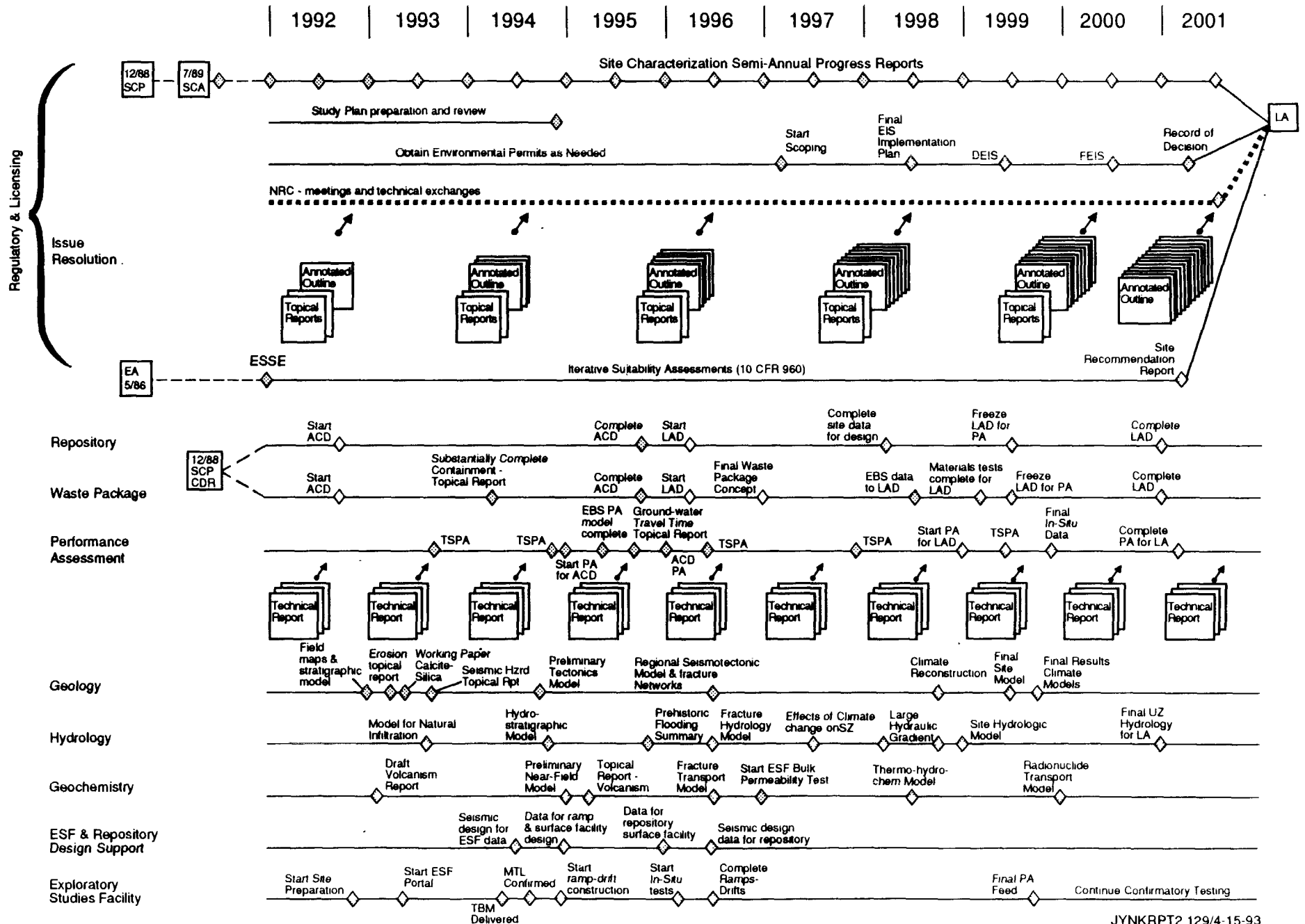
# Ongoing Issue Resolution Initiative



## Other Actions Underway



# Site Characterization Phase of Mined Geologic Disposal System Program



# Deciding When Enough is Enough

