

**U.S. DEPARTMENT OF ENERGY
OFFICE OF CIVILIAN RADIOACTIVE WASTE MANAGEMENT**

**PRESENTATION TO
THE NUCLEAR WASTE TECHNICAL REVIEW BOARD**

**SUBJECT: EVOLUTION OF THE
SOCIOECONOMIC PROGRAM**

PRESENTER: ERIC L. LUNDGAARD

**PRESENTER'S TITLE
AND ORGANIZATION: SOCIOECONOMIC PROGRAM MANAGER
YUCCA MOUNTAIN PROJECT OFFICE
U.S. DEPARTMENT OF ENERGY
LAS VEGAS, NEVADA**

**PRESENTER'S
TELEPHONE NUMBER: (702) 794-7951**

OCTOBER 16, 1990

**U.S. DEPARTMENT OF ENERGY
OFFICE OF CIVILIAN RADIOACTIVE WASTE MANAGEMENT**

**PRESENTATION TO
THE NUCLEAR WASTE TECHNICAL REVIEW BOARD**

**SUBJECT: EVOLUTION OF THE
SOCIOECONOMIC PROGRAM**

PRESENTER: ERIC L. LUNDGAARD

**PRESENTER'S TITLE
AND ORGANIZATION: SOCIOECONOMIC PROGRAM MANAGER
YUCCA MOUNTAIN PROJECT OFFICE
U.S. DEPARTMENT OF ENERGY
LAS VEGAS, NEVADA**

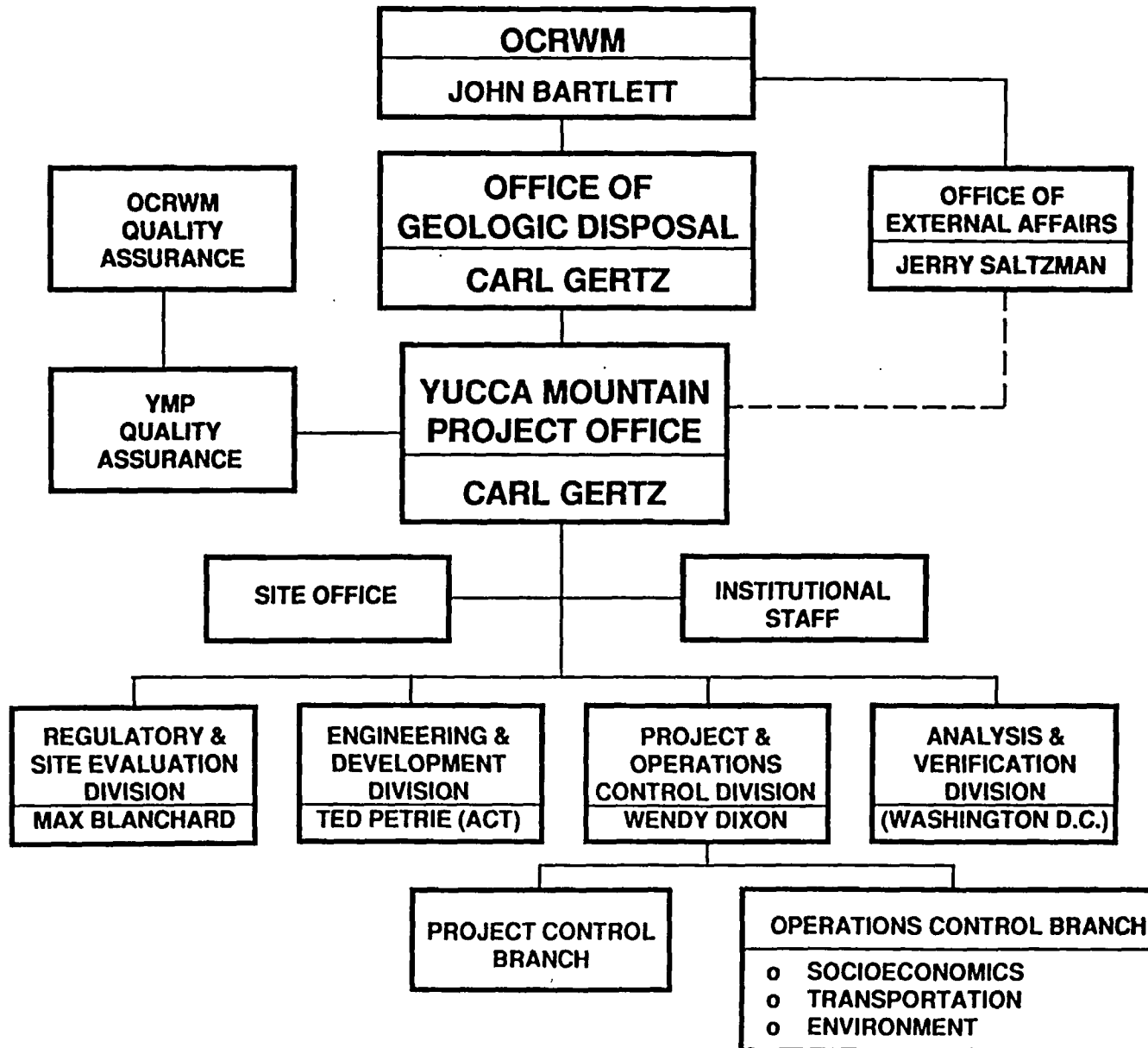
**PRESENTER'S
TELEPHONE NUMBER: (702) 794-7951**

OCTOBER 16, 1990

SOCIOECONOMIC PROGRAM PRESENTATION

- **ORGANIZATION**
- **EVOLUTION OF PROGRAM**
- **OVERVIEW OF CONSULTATION
DRAFT SOCIOECONOMIC PLAN**

YMP ORGANIZATIONAL STRUCTURE



EVOLUTION OF SOCIOECONOMIC PROGRAM

- **NUCLEAR WASTE POLICY ACT (NWPA) OF 1982**
 - **MULTIPLE SITES AND STATES**
 - **PARTICIPATION OF AFFECTED STATES AND INDIAN TRIBES**
 - **DEVELOP SITING GUIDELINES (10 CFR 960)**
 - **ENVIRONMENTAL ASSESSMENT (EA)**
 - **SOCIOECONOMIC MONITORING AND MITIGATION PLAN (SMMP)**

EVOLUTION OF SOCIOECONOMIC PROGRAM

(CONTINUED)

- **NUCLEAR WASTE POLICY AMENDMENTS ACT
(NWPAA) OF 1987**
 - **ONE SITE**
 - **PARTICIPATION OF STATE OF NEVADA AND LOCAL
JURISDICTIONS**
 - **SECTION 175 REPORT**
 - **CONSULTATION DRAFT OF THE YUCCA MOUNTAIN
PROJECT SOCIOECONOMIC PLAN**

EVOLUTION OF SOCIOECONOMIC PROGRAM

(CONTINUED)

● POLICY

- POLICY ADDRESSES MULTIPLE SITES IN MULTIPLE STATES**
- NATIONAL ENVIRONMENTAL POLICY ACT (NEPA)**
- PANE DECISION (1983)**
- "PSYCHOLOGICAL FACTORS" (1986)**
 - * NO PRIMARY RESEARCH CONCERNING PERCEPTION OF RISK**
 - * REVIEWING RECENT RESEARCH AND LITERATURE TO DEVELOP ANALYTIC CAPABILITY (ANL)**

SOCIOECONOMIC CONDITIONS IN SITING GUIDELINES (10 CFR 960)

● FAVORABLE CONDITIONS

- ABSORB PROJECT-RELATED POPULATION WITHOUT
SIGNIFICANT DISTURBANCE**
- AVAILABLE LABOR FORCE**
- PROJECTED INCREASES IN EMPLOYMENT, SALES,
GOVERNMENT REVENUES, AND IMPROVED COMMUNITY
SERVICES**

SOCIOECONOMIC CONDITIONS IN SITING GUIDELINES (10 CFR 960)

(CONTINUED)

- **POTENTIALLY ADVERSE CONDITIONS**
 - **POTENTIAL FOR SIGNIFICANT IMPACTS ON COMMUNITY SERVICE, HOUSING SUPPLY AND DEMAND, AND GOVERNMENT FINANCES**
 - **LACK OF ADEQUATE LABOR FORCE**
 - **NEED FOR REPOSITORY-RELATED PURCHASE OF WATER RIGHTS**

- **DISQUALIFYING CONDITION**
 - **SITE SHALL BE DISQUALIFIED IF IT SIGNIFICANTLY DEGRADES THE QUALITY OR QUANTITY OF WATER FROM MAJOR SOURCES OF OFF-SITE SUPPLY**

YUCCA MOUNTAIN ENVIRONMENTAL ASSESSMENT

- **DESCRIPTION OF YUCCA MOUNTAIN PROJECT**
- **CONCLUSIONS FROM YUCCA MOUNTAIN EA**
 - **THE SOCIAL AND ECONOMIC IMPACTS OF SITE CHARACTERIZATION-RELATED POPULATION ARE EXPECTED TO BE SMALL AND INSIGNIFICANT**
 - **ASSESSMENT OF ECONOMIC, DEMOGRAPHIC, AND SOCIAL CONDITIONS PROVIDED EVIDENCE THAT YUCCA MOUNTAIN IS LIKELY TO MEET QUALIFYING CONDITIONS**

EVOLUTION OF SOCIOECONOMIC PROGRAM

- **SOCIOECONOMIC MONITORING AND MITIGATION PLAN (1986 TO 1988)**
 - **COMPLIANCE WITH SECTION 113(a) OF THE NWPA OF 1982 (REQUIREMENT TO "MINIMIZE ANY SIGNIFICANT ADVERSE ENVIRONMENTAL IMPACTS")**
 - **SOCIOECONOMIC MONITORING LIMITED TO "POPULATION GROWTH AND DISTRIBUTION" AND "ECONOMIC STRUCTURE"**
 - **MITIGATION PROGRAM FOCUSED ON AVOIDING IMPACTS BY CHANGING SITE CHARACTERIZATION ACTIVITIES AND/OR SCHEDULES**

MONITORING OF YUCCA MOUNTAIN WORK FORCE

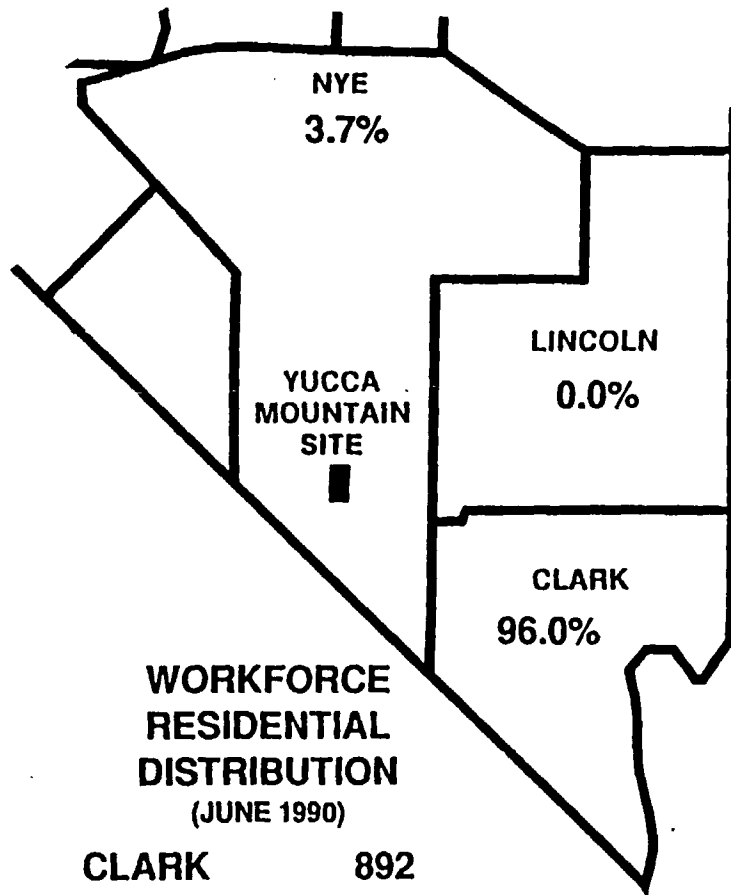
- **DATA RECEIVED FROM PROJECT PARTICIPANTS**
 - **TOTAL WORKERS AND FTEs BOTH OFF-SITE AND ON-SITE**
 - **NEW HIRES SINCE BEGINNING OF SITE CHARACTERIZATION PHASE**
 - **SETTLEMENT PATTERNS OF ALL WORKERS**
 - **INMIGRANTS AND DEPENDENTS TO SOUTHERN NEVADA SINCE BEGINNING OF SITE CHARACTERIZATION PHASE**
 - **OCCUPATIONAL GROUP OF WORKERS**

SOCIOECONOMIC MONITORING DATA REPORTS

- **ISSUED QUARTERLY**
- **PRESENT MONITORING DATA IN
SUMMARY FORM**
- **DISTRIBUTED TO AFFECTED PARTIES**

PROJECT WORKFORCE CHARACTERISTICS

(JUNE 1990 MONITORING REPORT)



**WORKFORCE
RESIDENTIAL
DISTRIBUTION
(JUNE 1990)**

| | |
|---------|------------|
| CLARK | 892 |
| NYE | 34 |
| LINCOLN | 0 |
| OTHER | 3 |
| NEVADA | <u>929</u> |

CUMULATIVE IMMIGRATION (JUNE 1986 - JUNE 1990)

| | WORKERS | POPULATION |
|---------|------------|------------|
| CLARK | 253 | 654 |
| NYE | 2 | 2 |
| LINCOLN | 0 | 0 |
| OTHER | 0 | 0 |
| NEVADA | <u>255</u> | <u>656</u> |

NUCLEAR WASTE POLICY AMENDMENTS ACT OF(1987)

- **DESIGNATED YUCCA MOUNTAIN AS ONLY LOCATION FOR SITE CHARACTERIZATION STUDIES**
- **REQUIRED REPORT TO CONGRESS ON FOURTEEN CATEGORIES OF POTENTIAL SOCIOECONOMIC IMPACTS**
- **AUTHORIZED DIRECT PARTICIPATION OF AFFECTED LOCAL GOVERNMENTS**

EVOLUTION OF SOCIOECONOMIC PROGRAM

- **SECTION 175 REPORT (1988)**
 - **CONCLUDED THAT SOCIOECONOMIC IMPACTS MIGHT OCCUR, PARTICULARLY IN THE COMMUNITIES CLOSEST TO THE SITE**
 - **PROVIDED FOR A MORE COMPREHENSIVE SOCIOECONOMIC MONITORING PROGRAM**
 - **PROVIDED THE BASIS FOR A SOCIOECONOMIC IMPACT MITIGATION PROCESS**

SECTION 175 REPORT

14 AREAS OF POTENTIAL IMPACTS

- EDUCATION**
- PUBLIC HEALTH**
- LAW ENFORCEMENT**
- FIRE PROTECTION**
- MEDICAL CARE**
- CULTURAL & RECREATIONAL NEEDS**
- DISTRIBUTION OF PUBLIC LANDS**
- VOCATION TRAINING & EMPLOYMENT SERVICES**
- SOCIAL SERVICES**
- TRANSPORTATION**
- EMERGENCY MANAGEMENT**
- AVAILABILITY OF ENERGY**
- TOURISM & ECONOMIC DEVELOPMENT**
- OTHER NEEDS OF STATE/ LOCAL GOVERNMENTS**

OVERVIEW OF CONSULTATION DRAFT SOCIOECONOMIC PLAN

- **OBJECTIVE - IDENTIFY POTENTIAL EFFECTS OF PROJECT ACTIVITIES ON SOCIOECONOMIC CHARACTERISTICS OF NEVADA COMMUNITIES, COUNTIES AND THE STATE**
- **CONSULTATION, COMMUNICATION, COORDINATION**
- **CONSULTATION DRAFT DISTRIBUTED APRIL 1990**
- **COMMENTS RECEIVED AUGUST 1990**
- **PROGRAM WILL EVOLVE AS RESULT OF CONSULTATION PROCESS**

INTERACTION WITH NEVADA RESIDENTS PROPOSED IN THE CONSULTATION DRAFT SOCIOECONOMIC PLAN

- **IDENTIFICATION OF ISSUES, INFORMATION NEEDS, AND
METHODOLOGIES OF INTEREST TO AFFECTED PARTIES**
 - **PROJECT CHARACTERISTICS**
 - * **CURRENT**
 - * **SHORT TERM FORECAST**
 - **EFFECT ON COMMUNITY SERVICES AND FACILITIES**
- **SERVICE PROVIDERS**
 - **QUARTERLY DATA**
- **COUNTY STEERING OR IMPACT ALLEVIATION COMMITTEES**
 - **QUARTERLY MEETINGS**
 - **TECHNICAL ASSISTANCE**
- **STATE OF NEVADA**
 - **SEMI ANNUAL SOCIOECONOMIC PROGRESS MEETING**

CONSULTATION DRAFT SOCIOECONOMIC PLAN

- **COMMITMENT TO INTERACTIVE PROCESS**
- **EXPANSION OF TECHNICAL SCOPE**
- **COOPERATIVE PROCESS FOR IMPACT ASSESSMENT AND MITIGATION**

EVOLUTION OF SOCIOECONOMIC PROGRAM

- **LEGISLATION**

- NWPA OF 1982
- NWPAA OF 1987

- **DOE POLICY**

- **INPUT FROM STATE AND LOCAL GOVERNMENTS**

- EXPAND GEOGRAPHIC SCOPE
- ENHANCE TECHNICAL SCOPE