

**U.S. DEPARTMENT OF ENERGY  
OFFICE OF CIVILIAN RADIOACTIVE WASTE MANAGEMENT**

**PRESENTATION TO  
THE NUCLEAR WASTE TECHNICAL REVIEW BOARD**

**SUBJECT: IMPLEMENTING A QUALITY ASSURANCE PROGRAM**

**PRESENTER: DONALD G. HORTON**

**PRESENTER'S TITLE**

**AND ORGANIZATION: ACTING DIRECTOR**

**OFFICE OF QUALITY ASSURANCE, RW-3  
OFFICE OF CIVILIAN RADIOACTIVE WASTE  
WASTE MANAGEMENT  
US DEPARTMENT OF ENERGY  
WASHINGTON, D.C. 20585**

**PRESENTER'S TELEPHONE NUMBER: (202) 586-8858**

## **OCRWM QUALITY ASSURANCE PROGRAM**

- **DOE has initiated a QA program consistent with 10 CFR 60 Subpart G based on provisions similar to those used in reactor siting and construction.**
- **The QA program applies to the Office of Civilian Radioactive Waste Management (OCRWM) and other affected organizations.**
- **QA has a document hierarchy that follows ANSI/ASME NQA-1-1989.**
  - **The QA documents amplify the provisions of NRC regulations (10 CFR 60, 10 CFR 71, 10 CFR 72, 10 CFR 50 Appendix B)**
  - **The QA documents must allow application of other regulations in the processes of siting, design, and construction**

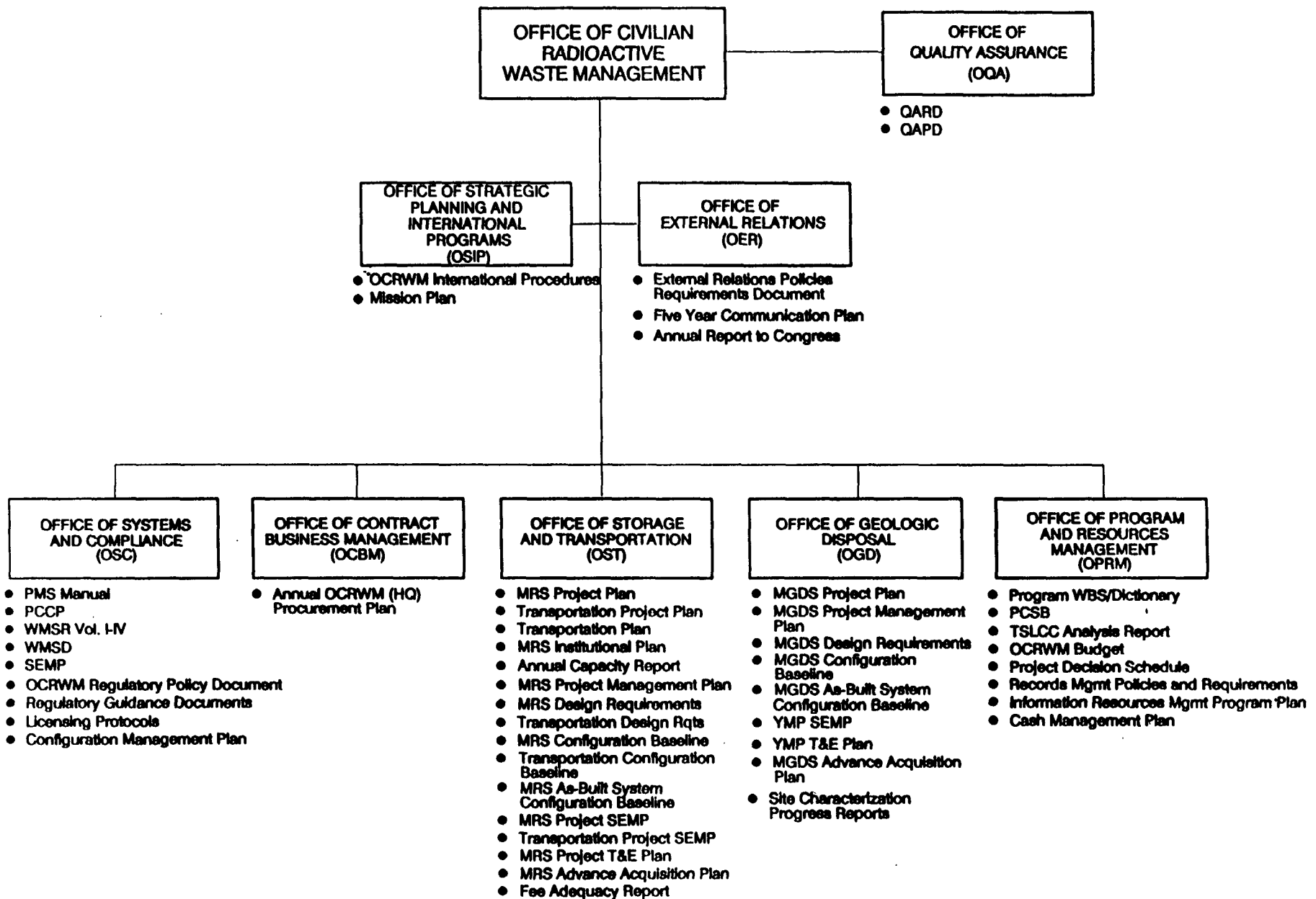
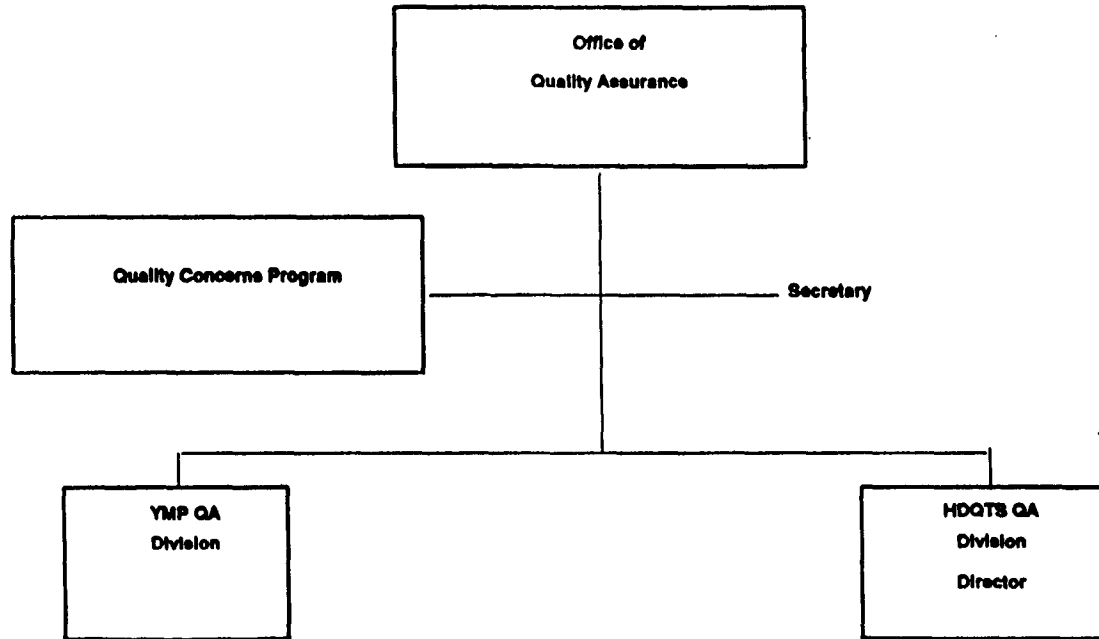


Figure 2-1. PMS Responsibilities of OCRWM Offices.

## Organization Chart for Office of Quality Assurance



## **ACHIEVEMENT OF QUALITY**

- **Each person in the program is responsible for the achievement of quality in the work the person performs.**
- **The Program Director retains responsibility for the total QA program.**
- **The QA program provides for both achievement of quality and verification of that achievement.**
- **The QA organization has the responsibility to provide assurance to senior line management of the line organization's achievement and verification of quality.**
- **The QA organization conducts overview activities such as audits, surveillances, and reviews.**
- **In addition to overview activities, the QA organization performs support functions in the implementation of QA guidance.**

## **APPLICATION OF QA CONTROLS**

- **Managers assign controls to each task depending on the importance of each activity to safety, waste isolation, and program objectives.**
- **For each participant, the implementing documents are different, but the management processes are similar.**
- **Each contractor has QA specifications included in their contract and statement of work.**

## **OCRWM QA REQUIREMENTS DOCUMENT (QARD)**

- **The QARD defines the upper-tier requirements governing the activities affecting quality for all program participants.**
- **The QARD contains 19 sections amplifying similar sections in ANSI/ASME NQA-1-1989 and applying to all program elements.**
- **DOE participants develop quality assurance program descriptions and lower-tier documents to implement provisions of the QARD. A common Quality Assurance Program Description (QAPD) has been developed for OCRWM.**
- **The QARD does not contain the detailed technical requirements and criteria of regulations, NUREGs, DOE Orders, and OCRWM guidance. Such detail is contained in lower-tier documents.**

## **OCRWM QA PROGRAM DESCRIPTION DOCUMENT (QAPD)**

- **The QAPD describes the organization and responsibilities within that organization.**
- **The QAPD assumes that OCRWM will establish separate project offices for the MGDS, MRS, and Transportation functions.**
- **The QAPD defines the scope of OCRWM activities considered quality affecting.**



## **OCRWM DOCUMENT HIERARCHY**

- **OCRWM divides its plans into management and technical documents.**
- **Review responsibilities for each document are individually controlled.**
- **Technical reports are below the level of the planning documents in the document hierarchy, but are still controlled by QA provisions.**
- **The July 1990 reorganization has required revisions to the OCRWM document hierarchy.**

## **QA PROCEDURES CONSOLIDATION PLAN**

- **As a result of the July 1990 reorganization of OCRWM, the Headquarters and Project Office QARD and QAPD were consolidated into one set of upper-tier QA program documents.**
- **The Director of OQA and the AD-Office of Geologic Disposal will be the leaders of a team that consolidates, where practical, the common YMPO and DOE/HQ QA procedures.**
- **A transition plan was issued identifying procedure priorities, time and resources required, and a proposed working schedule for consolidation.**

## **ASSIGNMENT OF QA GRADING**

- **Grading of items and activities important to safety, waste isolation, and program objectives is conducted by OCRWM and the YMPO.**
- **For OCRWM, grading is a prerequisite to performance of work.**
- **Based on the guidance of Nureg-1318, an assessment is performed to consider candidates for inclusion on a Q-List (items important to safety and items important to waste isolation) and a Quality Activities List (actions that can affect waste isolation).**